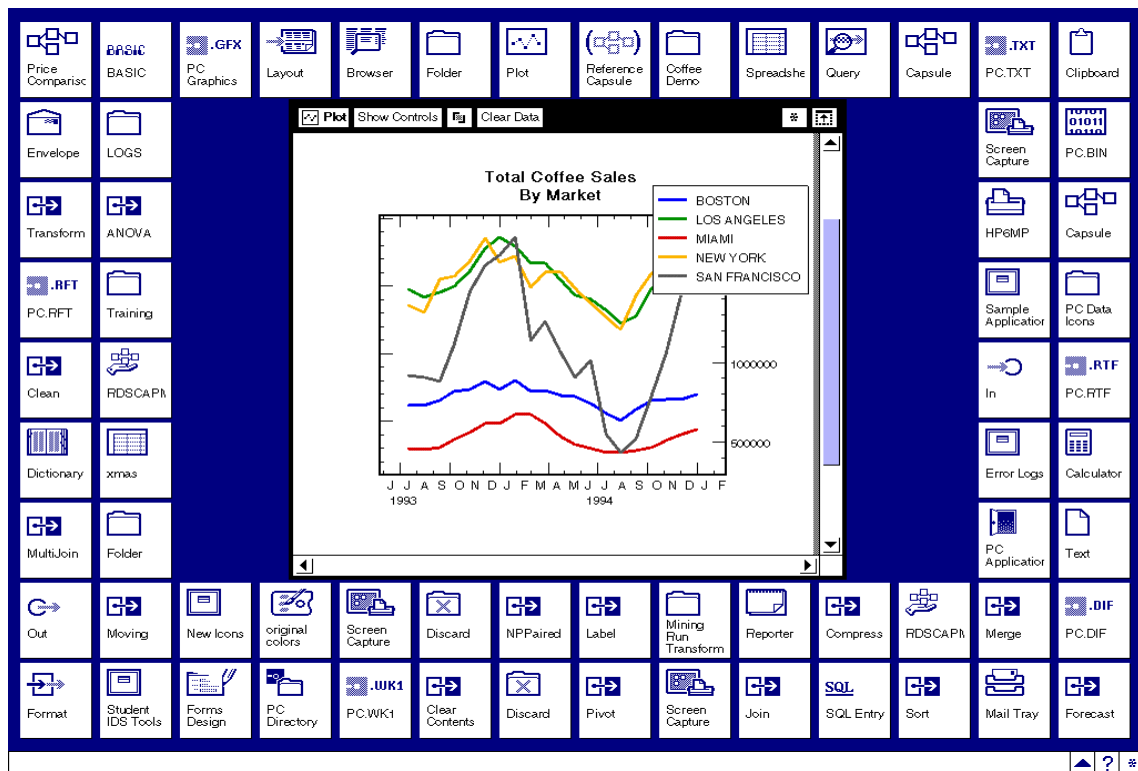


meta5.com

Integrating the Business World's Information, Data, and Applications

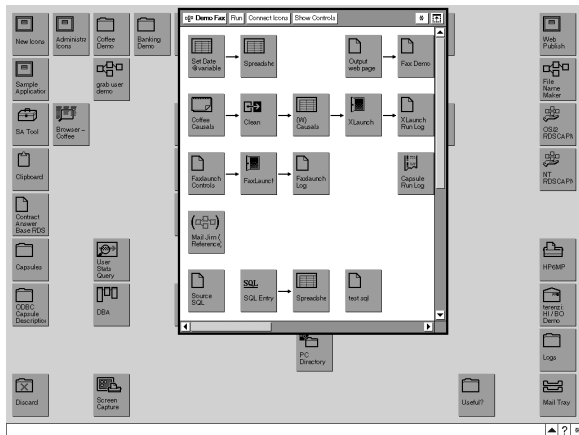
In today's highly competitive world, decision makers must make knowledgeable decisions to help their businesses succeed. They face the challenge of analyzing data from disparate sources to address vital business issues.

Meta5 is a network-based analytical server designed to support a wide range of popular clients for applications that demand multi-dimensional and other varieties of data analysis.



5th Generation programming environment

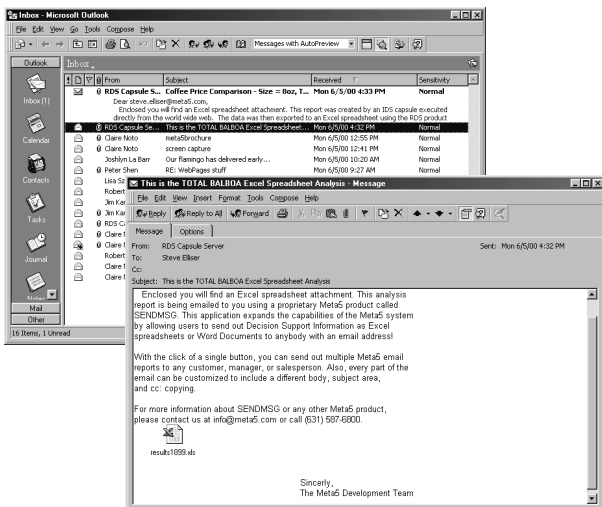
To create applications, Meta5 provides a graphical application development environment for use by business analysts and business intelligence application developers. Applications are created without the use of a scripting language!



Intuitive Meta5 "drag and drop" capsule development environment

This environment combines powerful analytical objects with the ability to assemble these objects into integrated applications called Capsules. In a Capsule, entire sequences of data access and analysis tasks can be automated simply by connecting objects with arrows to show how data flows from one tool to another.

The application development environment runs under Windows 95/98, Windows NT, and Windows 2000.



Deliver your Meta5 output via internet e-mail!

We've added these integration tools to Meta5:

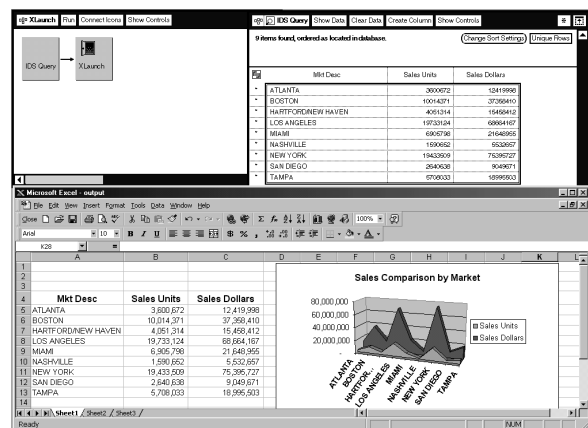
- Xlaunch
- Sendmsg
- Wordtool

Xlaunch is a powerful, efficient tool for Meta5 Capsules to transfer information directly to MS Excel. This tool allows you to take iterating Capsule reports and turn them into Excel spreadsheets that can be analyzed and manipulated by non-Meta5 users.

Sendmsg allows you to use Meta5 Capsules to send internet mail. This program will also allow you to send out the results of your Meta5 Capsules as Microsoft Outlook Email attachments.

Wordtool is a solution for Meta5 Capsules to transfer text information directly to MS Word. Have a formatted Word document created for you automatically.

Meta5 is committed to integrating PC-based applications into the Capsule environment. Look for your favorite PC applications to be integrated into Meta5. *Is your application "Capsule Ready"?*

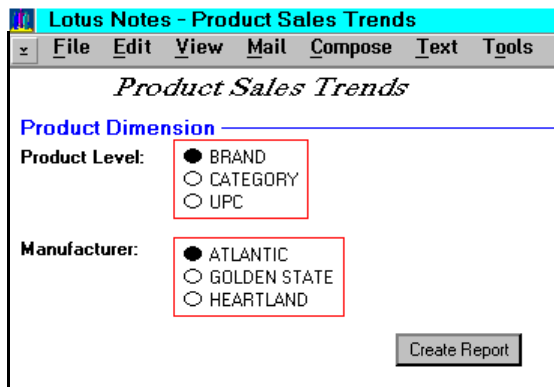


*Xlaunch in Action!
Excel output from an IDS query tool.*

Designed for today's open environments

Meta5 is designed for the open world of corporate computing. Users can access Meta5 applications and retrieve results from most popular clients, such as:

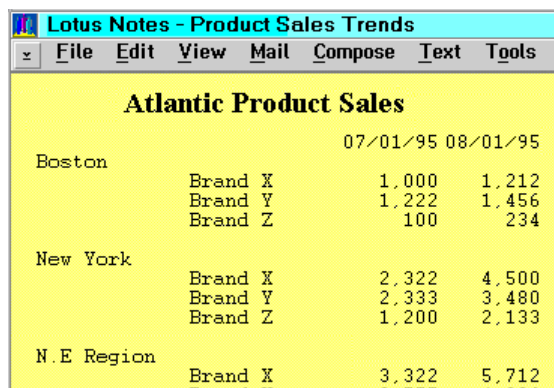
- Web Browsers
- Lotus Notes clients
- ODBC-enabled tools
- Custom applications



Meta5 using a Lotus Notes client.

Integrate, analyze, collaborate

Meta5 helps forge strong decision-making teams, no matter where they are located within your company. It does this by providing a strong, flexible suite of software tools for retrieving and analyzing data, and then presenting the final results. Using Meta5's enabling to Lotus Notes, a unique feature not matched by any decision support tool, Meta5 makes it much easier for team members to share data, ideas, studies and perspectives. The result is a truly collaborative process that transforms immense volumes of raw data into valuable business information.



Meta5 results returned into a Lotus Notes Form

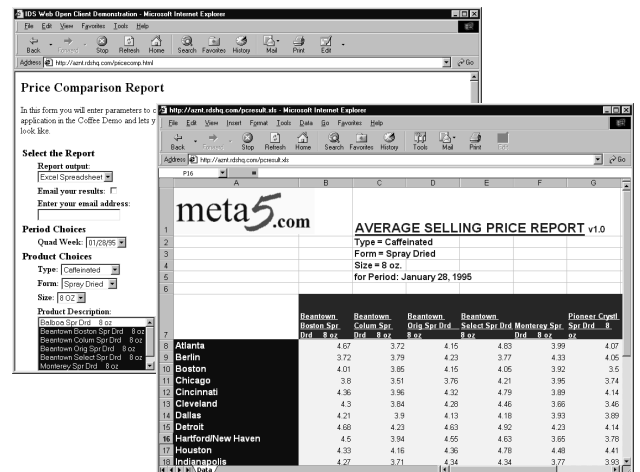
Support a wide range of needs

Meta5 Capsules run in highly scalable, server-based environments. They provide a customizable end-user solution for Web browsers, users of Lotus Notes, and many other client applications. The Capsule output can take many forms – for example, graphics rendered on the fly by Meta5 and returned in GIF or bitmap form. Other forms can be text, spreadsheets or data files.

Individuals with a need for ad hoc data access can use the powerful Query and Reporter tools to generate complex multi-dimensional analysis. The Layout tool combines rich report formatting and calculation capabilities that allow Meta5 users at all skill levels to generate and share high-impact reports.

Meta5 is as flexible as it is open. It can scale to meet the needs of any organization – from a small local workgroup to thousands of decision makers located around the world. Plus, its 32-bit implementation ensures top performance.

Meta5 has everything you need to bring advanced business intelligence capabilities to your user, available in easy-to-install starter configuration. Additional Meta5 components are available as your requirements grow and change.



A Meta5 input form and resulting Excel spreadsheet

Transparent data access

Meta5 data access tools provide true cross-platform access. Meta5 provides native, high-performance access to:

- IBM DB2 Family
- Oracle
- Sybase
- Red Brick
- IBM DataJoiner for access to other databases

Built-in analytic functions

Analytic functions and tools are provided as objects which are graphically linked to form powerful business intelligence applications. These analytical functions include:

- Multidimensional analysis
- Regression Analysis
- Correlation
- Forecasting
- Trend Analysis
- Statistical Significance
- Seasonality
- Sample Testing
- Transformations

Critical Success Factors for Meta5

- Data aligned along business dimensions
- Friendly, flexible and efficiently deployed analytical tools
- Analytical techniques which continually evolve
- Direct availability of analysis results to decision makers
- Common business logic shared across the enterprise
- A high degree of scalability and flexibility
- Integration with other PC applications

meta5.com

Meta5, Inc.
122 West Main Street
Babylon, NY 11702

Voice: (631) 587-6800
Fax: (631) 587-6801
Email: info@meta5.com
Web: www.meta5.com

Printed in the United States of America
6-00
All Rights Reserved

Meta5.com is a registered trademark of Meta5, Inc.

All other product or company names used in this publication are trademarks or registered trademarks of their respective companies.

Visit us on the Web at <http://www.meta5.com>